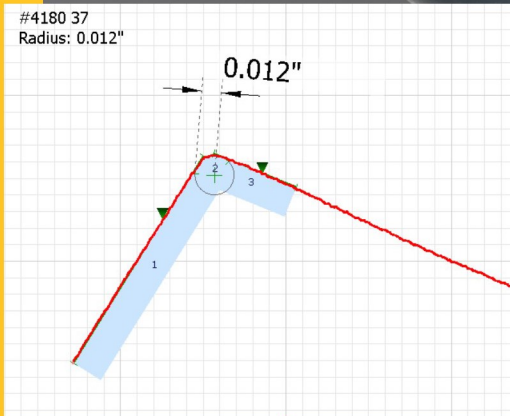
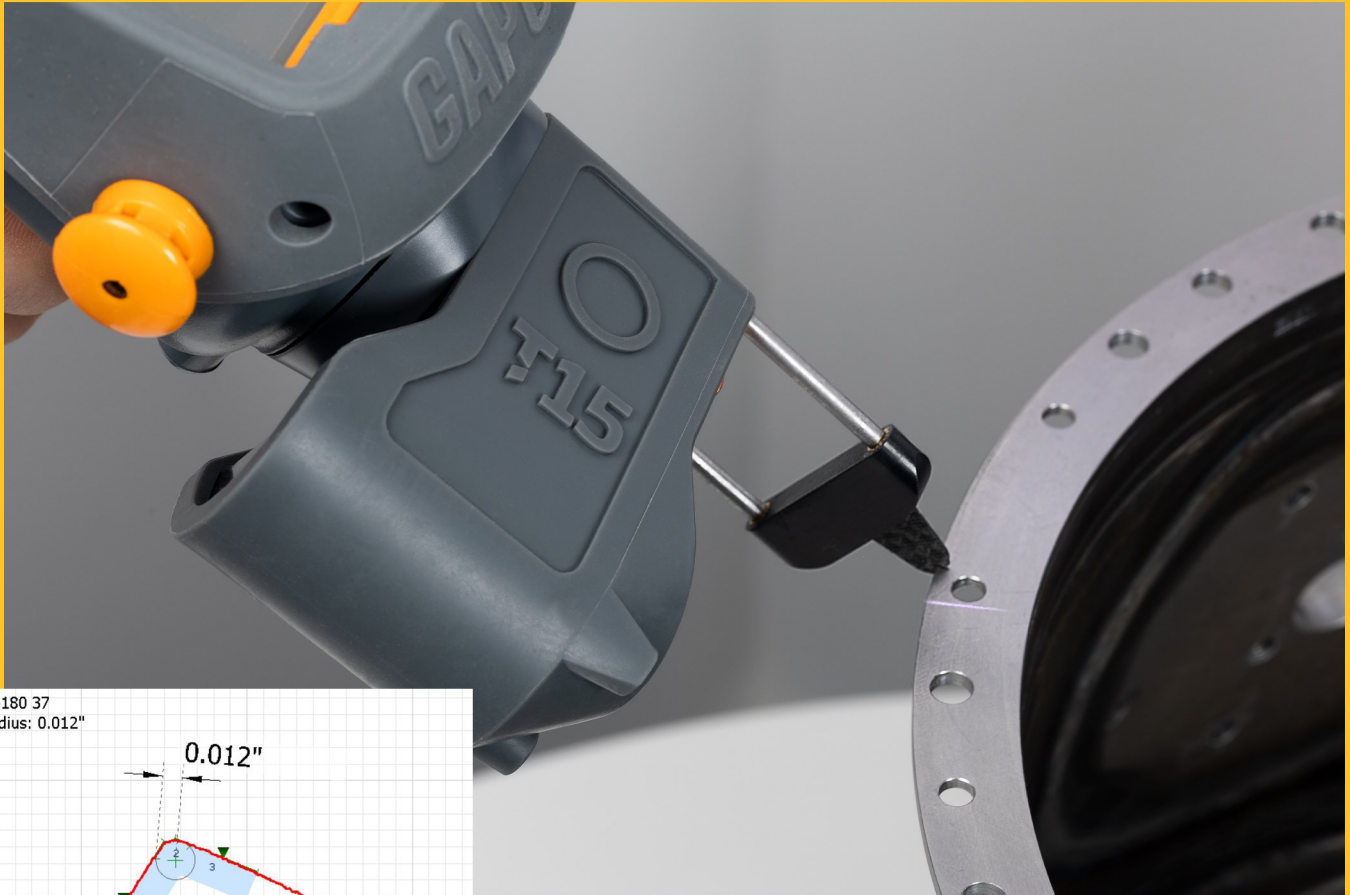


## EDGEBREAK



- Break Edge
- Small Radius
- Chamfer

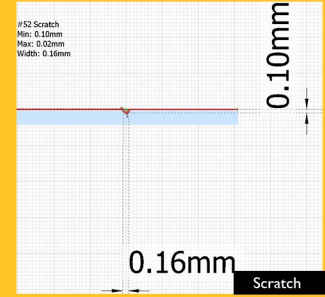
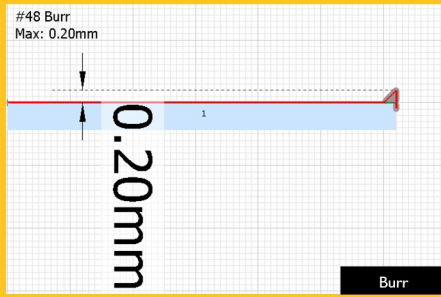
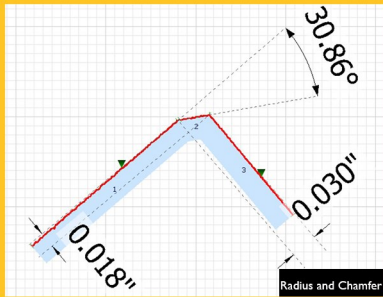


### BRINGING PRECISION CHAMFER, BREAK EDGE AND RADIUS INSPECTION TO THE SHOP FLOOR

**Precision inspection of small features on the shop floor.** Break edge inspection is critical for turbine manufacturers. Sharp edges must be smoothed down to radii or chamfers of precise dimensions to prevent undue stress during operation and ensure safe operation of gas turbines. GapGun EdgeBreak capability enables this complex and challenging inspection to be performed seamlessly on the shop floor

# T-15 SUPER HIGH RESOLUTION

- Typical feature size range: 0.1mm- 3.0mm
- Scratches, defects, fasteners, chamfers and profiles, turbine blades, small gap and flush, radii



## USE THE GAPGUN PRO 2 WITHOUT STAND-OFFS

- On any surfaces that are soft, plastic or may move
- Where surface damage is a concern
- For hard to reach, concave or restricted areas



## USE THE GAPGUN PRO WITH STAND-OFFS

- Allows measurement of hard to reach or complex features



## GAPGUN AUTOMATION

- Using the GapGun AccuCheck system on a robot enables superior repeatability with productivity of up to 15 measurements per minute.

**Accurex**  
Dimensional Measurement Systems

Accurex Measurement, Inc.  
Swarthmore, PA  
800-535-5798 | [info@accurexmeasure.com](mailto:info@accurexmeasure.com)  
[www.accurexmeasure.com](http://www.accurexmeasure.com)